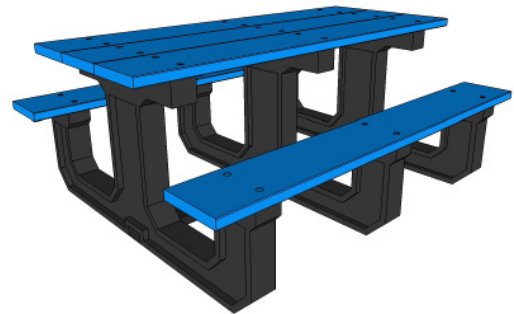




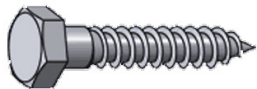
A PLAYCORE Company



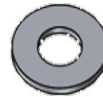
PARK PLACE PICNIC TABLE 6 FT

TOOLS REQUIRED: 1/2" SOCKET
1/4" SOCKET
TAPE MEASURE

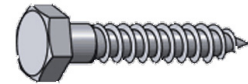
MATERIALS



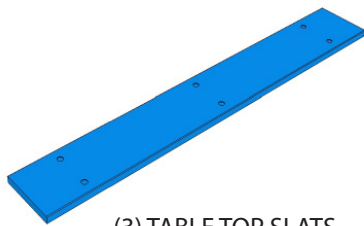
(30) 1/2" x 4" HEX LAG SCREWS



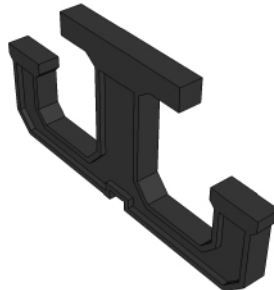
(3) WASHERS



(3) 1/4" x 3-1/2" HEX LAG SCREWS



(3) TABLE TOP SLATS
(2) SEAT SLATS

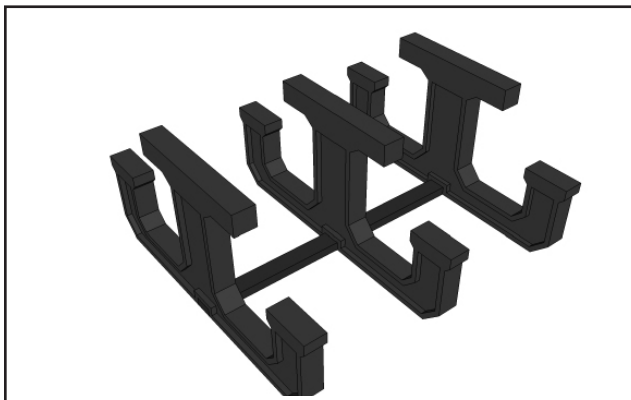


(3) BASES

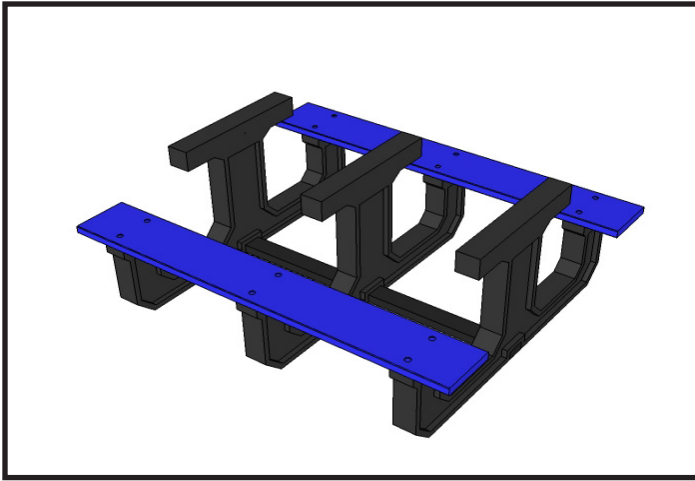


(1) CENTER SUPPORT

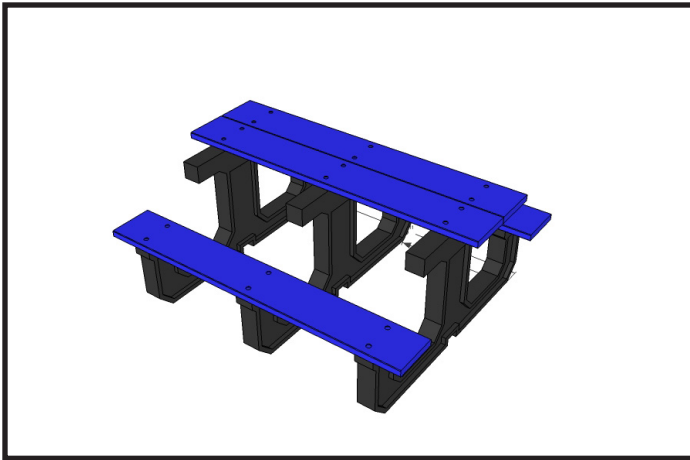
INSTRUCTIONS



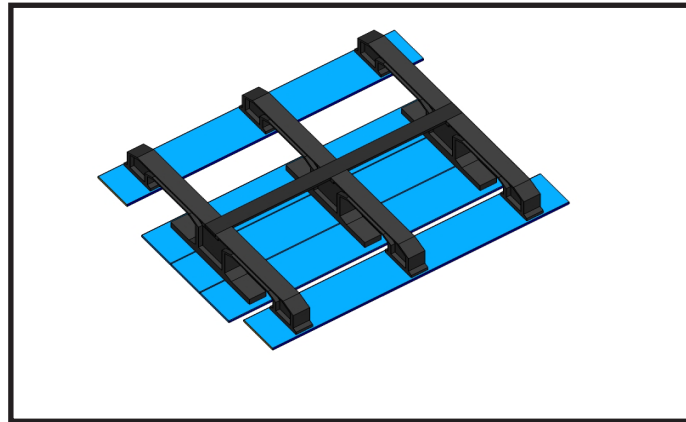
1. Verify all parts and hardware before beginning.
2. Place two of the plastic bases on a flat level surface. Using tape measure find midpoint of bases which will be at 30" and place the remaining base in location. Also use the center support board as a guide to lining them straight. You will attach this board at the end.



3. Place one seat slat on each side of the base. With the bases in the vertical position, pre-drill two holes on both ends of each seat slat with a 3/8" drill bit.



4. Loosely attach table slats to plastic base with the 4" lag screws using the socket wrench. Make sure to lay them all on top first to line them up. Then pre drill starter holes.



5. With the aide of another person, flip the table 180° so that the table top is resting on the ground. Place the center support in the grooved notch and fasten the support using the 3-1/2" lag screws and washers. Turn back over and now enjoy your table.

