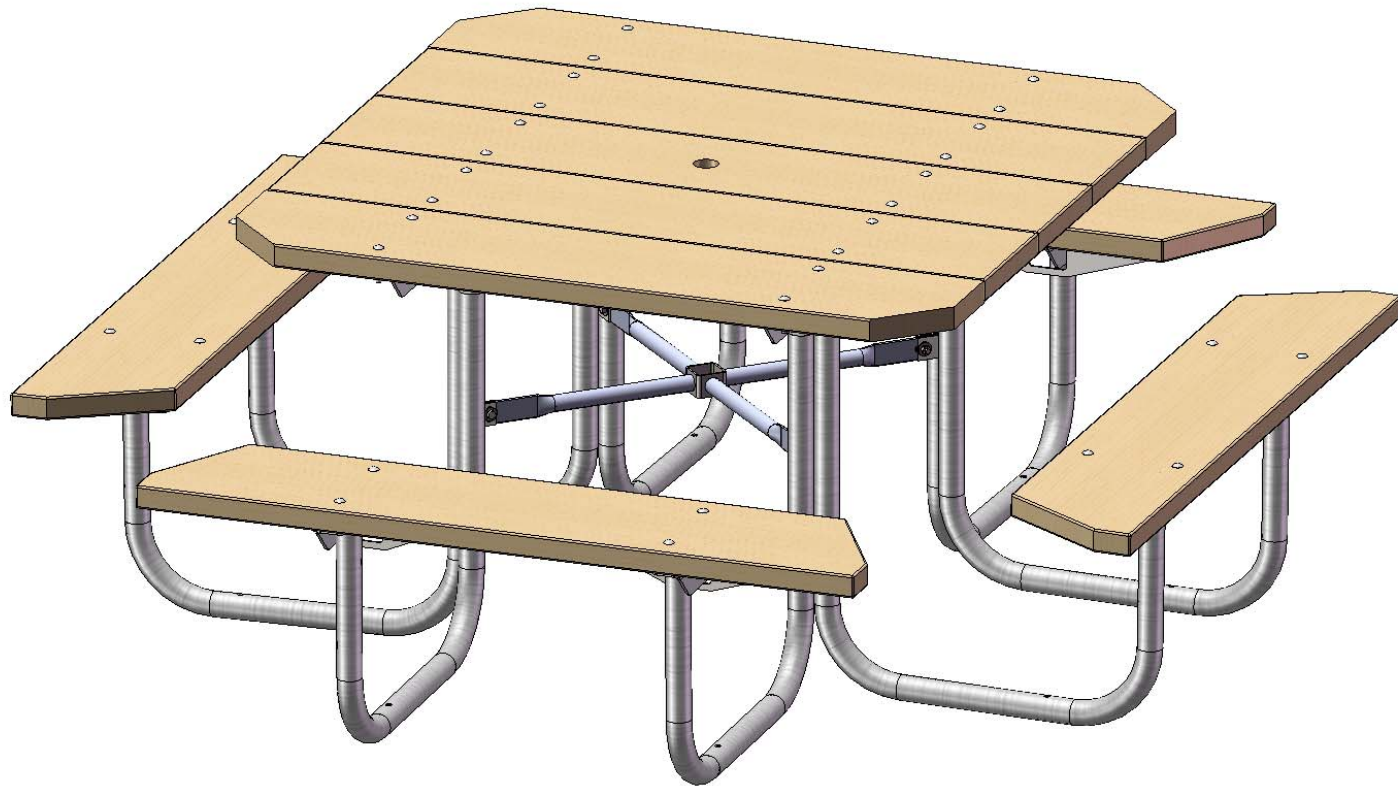




A PLAYCORE Company



Model # 358-R48

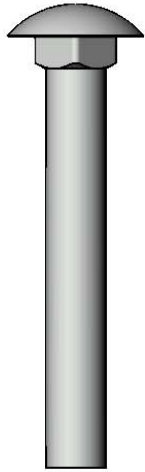


A PLAYCORE Company

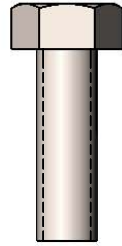
## **SAFETY WARNINGS & EQUIPMENT INSPECTION**

- Owners and installers please note these safety warnings and make use of this checklist on a regular basis.
- Follow installation instructions when erecting equipment.
- Ground surfaces around equipment should be restored as needed. Concrete footings should never be exposed. Surface depth should comply with ASTM and CPSC specifications.
- Check for and repair damage caused by wear or vandalism, a major factor in injury causing situations.
- All protruding bolts should be covered or cut off and finished smooth. Sharp edges on pipes should be capped or removed. Check for bent, broken, or severely worn pipe, and replace.
- All equipment should be free of rust and repainted whenever necessary to deter rusting.
- We provide our customers with layout sheets and installation instructions. Please keep on file the specifications sheet that contains the listing of every part used.
- Never add components not intended for use with this product.
- Regular maintenance is necessary in this and all park and recreational equipment to insure the safety of the user.
- Note: Proper maintenance of equipment requires regular tightening of all bolts, nuts, and setscrews.
- Note: Regular checking of all parts, castings, etc. should be made. If a part is broken or worn, it should be replaced immediately.
- Check to be sure all fittings are tight and that bars and pipes do not move.
- Replace all worn S-hooks. S-hooks must be completely closed. Failure to close S-hooks can result in serious injury to the user. NEVER reuse S-hooks.
- Test for free movement of swing hanger and other moving attached parts.
- Check for worn chains and replace them.
- A soft resilient surface should be placed under all swings extending at least twice the height of the top rail both front and back.

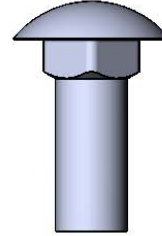
# HARDWARE



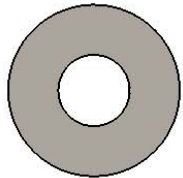
5/16" x 2-1/4"  
Carriage Bolt



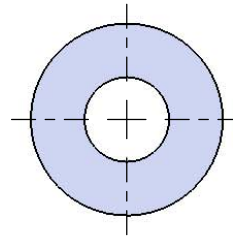
5/16" x 1"  
Machine Bolt



3/8" x 1"  
Carriage Bolt



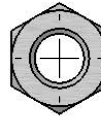
5/16" Washer



3/8" Washer

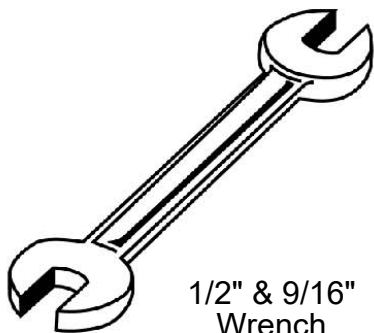


5/16" Hex Nut

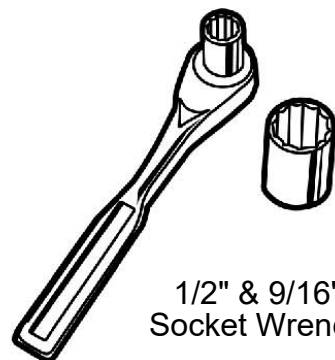


3/8" Hex Nut

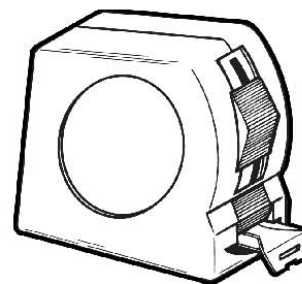
## TOOLS REQUIRED



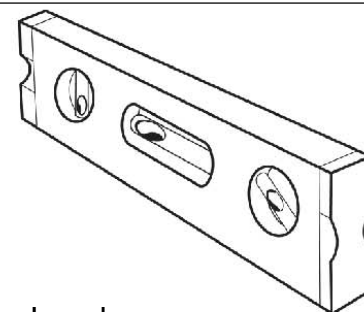
1/2" & 9/16"  
Wrench



1/2" & 9/16"  
Socket Wrench



Tape Measure



Level

# ULTRA SITE PRODUCT SPECIFICATIONS

## **358-R48 48" PORTABLE TABLE WITH 4 SEATS**

Top & Seats: Minimum of 96% commingled post-consumer or post-industrial recycled plastic. With a maximum of 4% due to various additives including color and UV stabilization to obtain desirable properties. Each seat is reinforced with 1/4" steel strips.

Frame: 1-5/8" O.D. x 14 gauge pre-galvanized structural steel tubing. Legs are bent over a mandrel through the bend radius producing a wrinkle free bend. Brace attachment points are 1-1/2"x2"x3/16" steel flat bar. Cross braces 1" O.D. x 16 gauge pre-galvanized structural steel tubing. The tabletop attachment angle is 2" x 2" x 3/16" formed steel angle which is mechanically fastened to the legs. Seat mounting angle is 2" x 2" x 3/16" formed steel angle which is MIG welded to the legs. All electrically MIG welded. Superstructure angles under seat are 12ga formed steel plate.

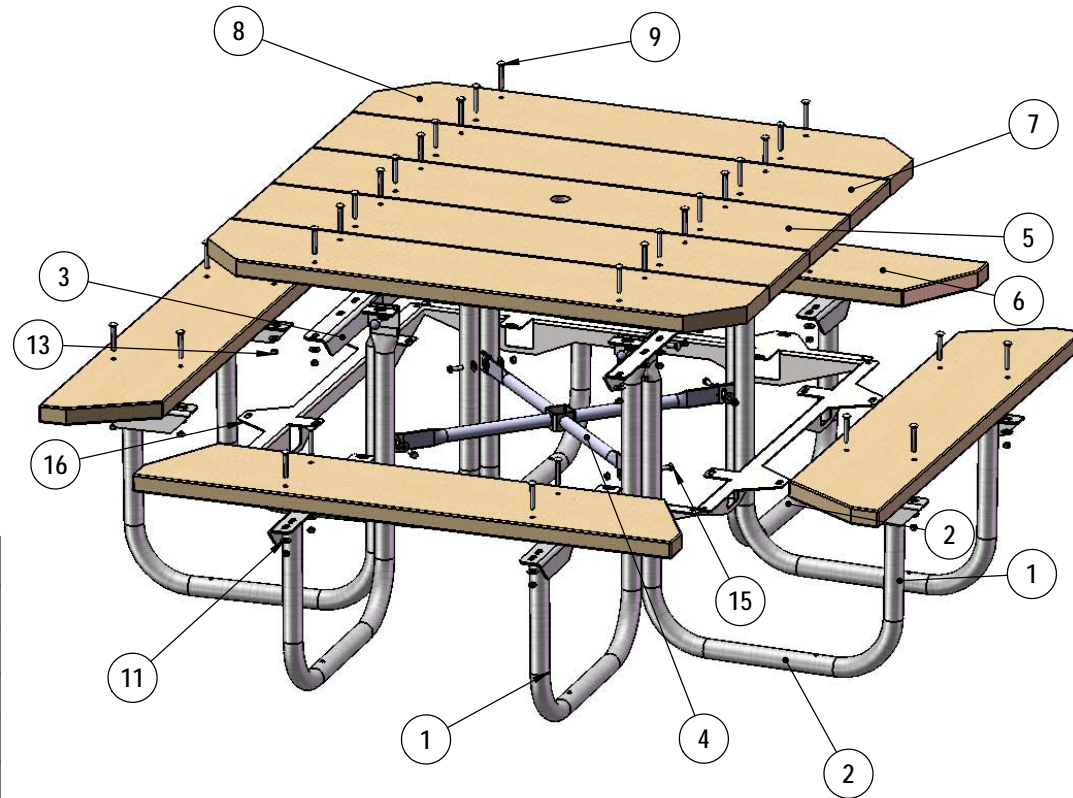
Frame Coating: Electrostatic powder coated application oven cured or hot dipped galvanized.

Hardware: All zinc coated steel hardware fasteners.

Dimensions: Top is 48" x 47-1/2" x 30" high. Seats are 9-1/4" x 48" long x 18" high. Outside to outside dimensions of the 4 seat table is 74-1/2" x 66-1/4".

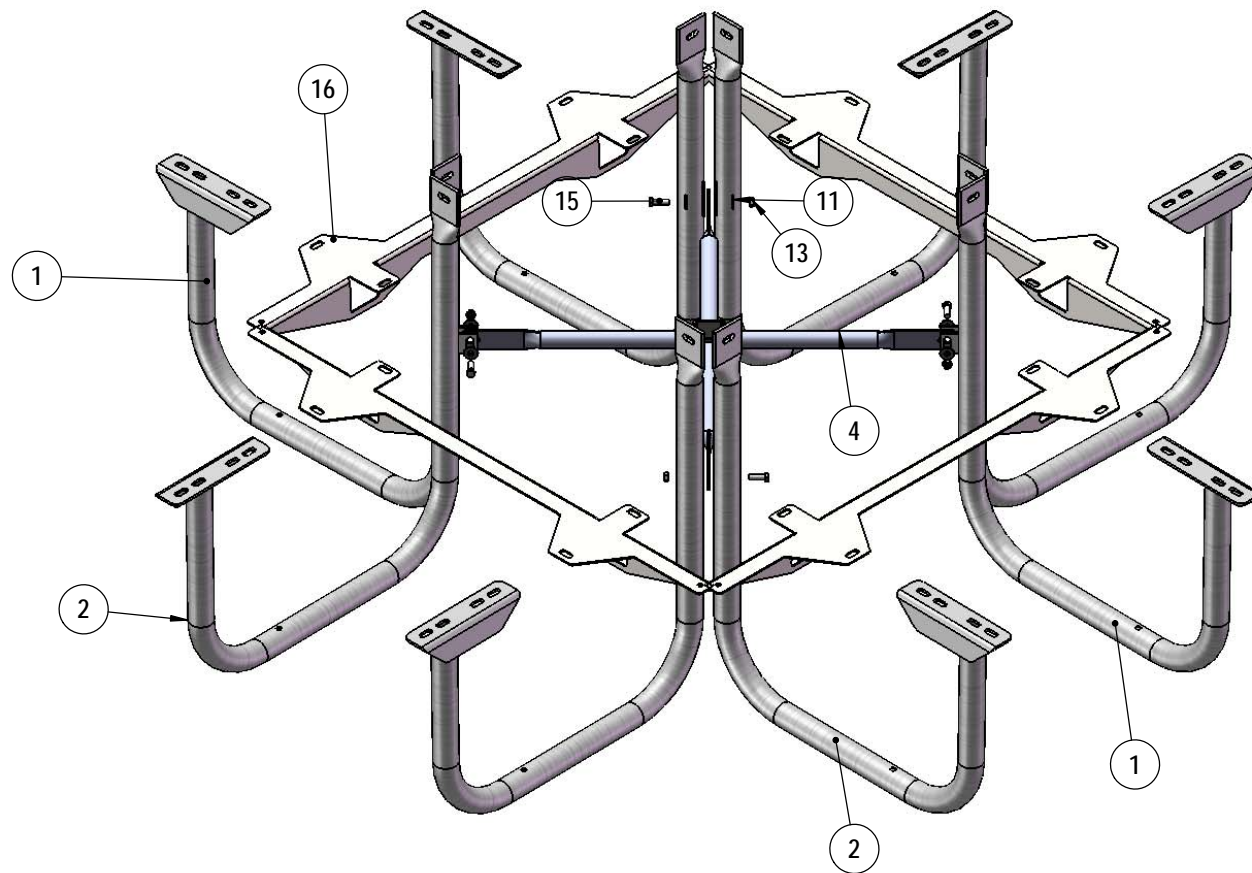
# COMPONENTS

ITEM NO.	PartNo	DESCRIPTION	QTY.
1	W358-R	358 Wood Leg - Right	4
2	W358-L	358 Wood Leg - Left	4
3	01-04-0346	358 Wood Angle Assembly	2
4	P-01-04-0122	358 Crossbrace w/ Umbrella Tube	1
5	R48-2x10-UT	2 x 10 Recycled Umbrella Table Plank (48")	1
6	R48-2x10-MS	2 x 10 Recycled Mitered Seat Plank (48")	4
7	R48-2x10-T	2 x 10 Recycled Table Plank (48")	2
8	R48-2x10-MT	2 x 10 Recycled Mitered Table Plank (48")	2
9	33-06-0006	5/16" x 2 1/4" Carriage Bolt (Zinc)	36
10	33-06-0063	3/8" x 1" Carriage Bolt (Zinc)	8
11	33-02-0001	5/16" Zinc Plated Washer	44
12	33-02-0002	3/8" Zinc Plated Washer	8
13	33-01-0001	5/16" Hex Nut (Zinc)	40
14	33-01-0002	3/8" Hex Nut (Zinc)	8
15	33-05-0001	5/16" x 1" Machine Bolt (Zinc)	4
16	01-04-0772	4' square table seat recycled plastic superstructure angle	4



Optional Surface Mount Hardware:  
5/16" x 4-1/2" Concrete Expansion Anchor Bolts  
(Not Included)

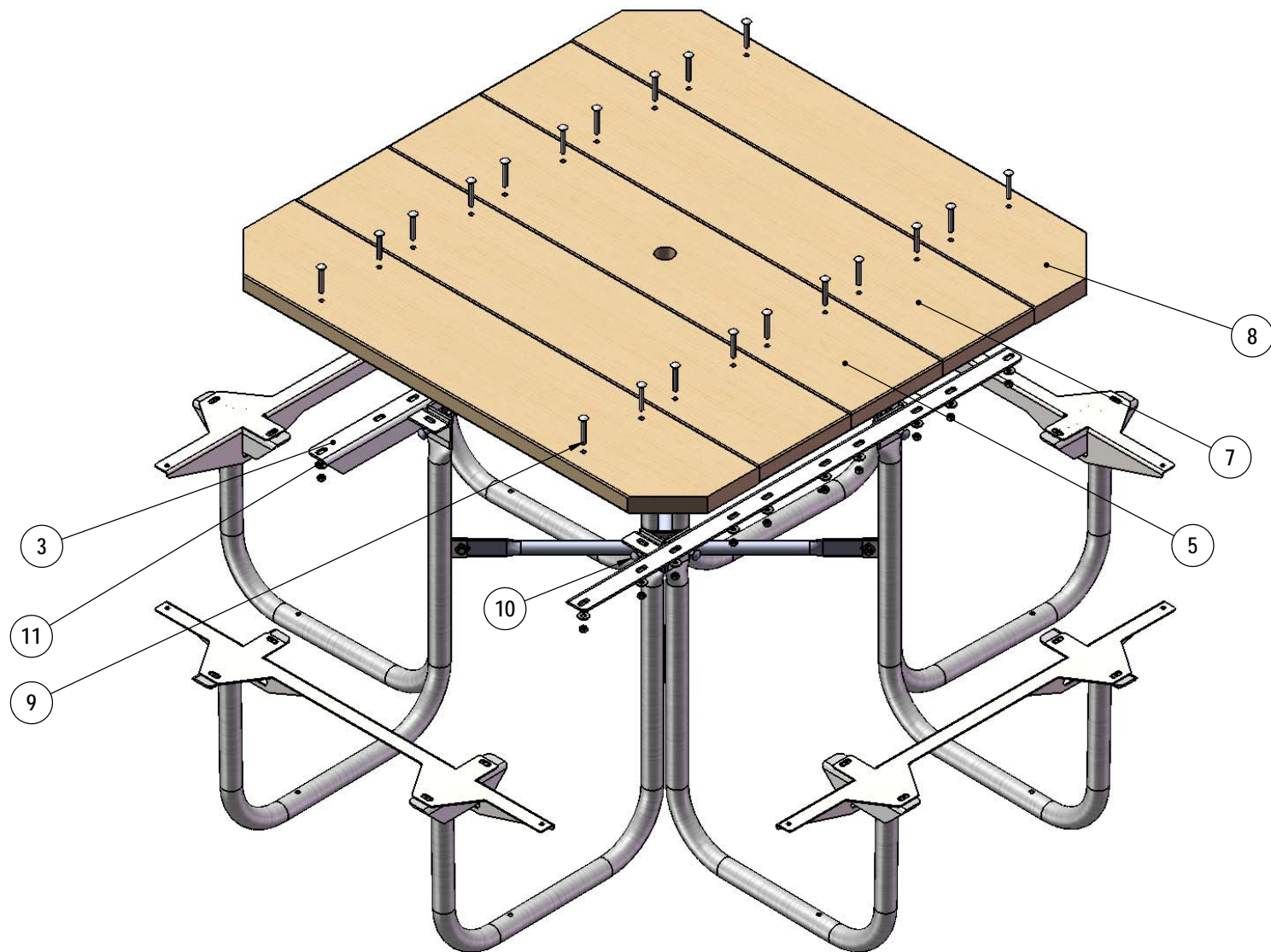
## STEP 1



Attach the 358 legs to the 358 crossbrace using the specified hardware.  
Slide superstructure angles over seat angles



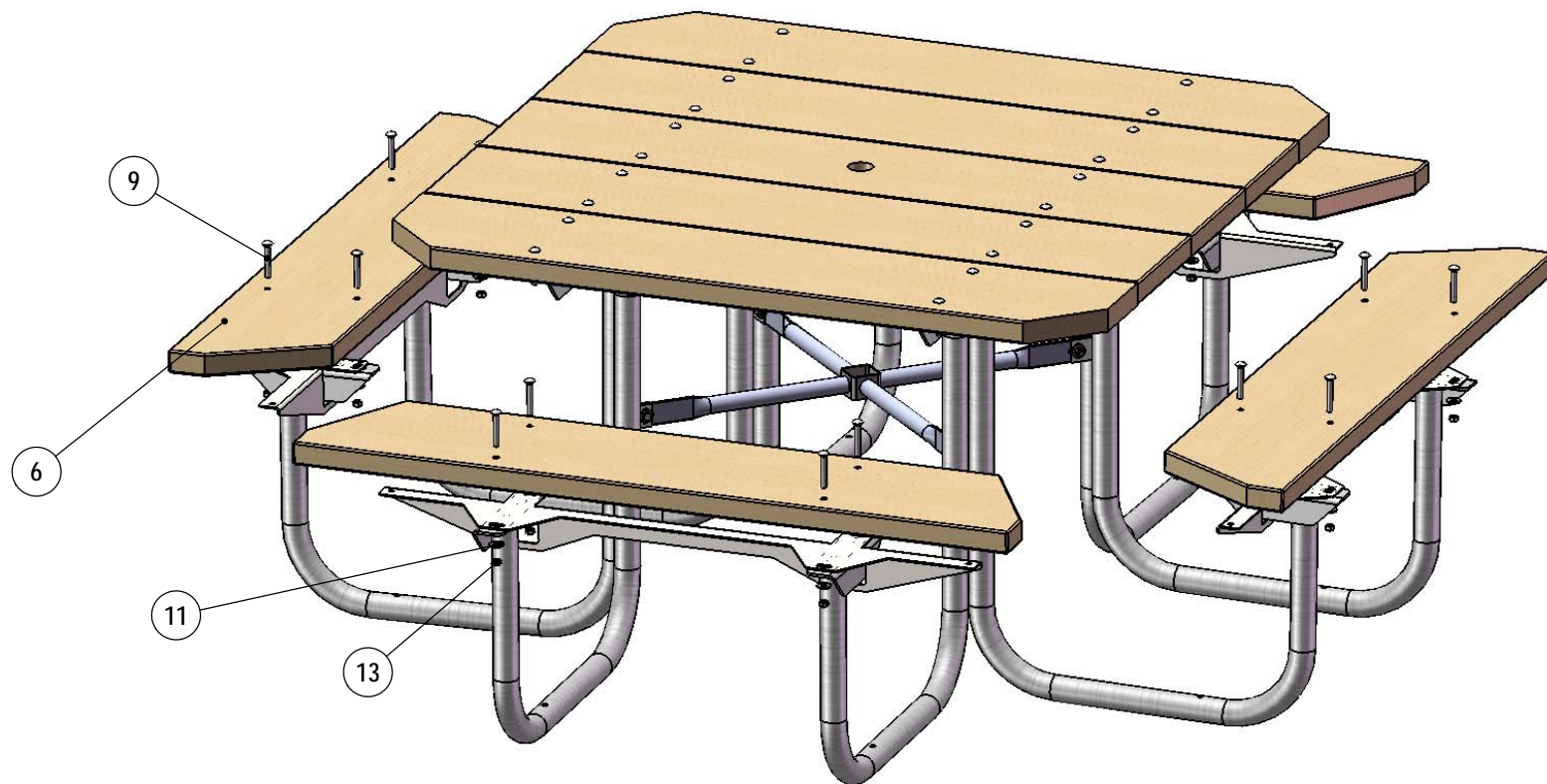
## STEP 2



Attach the 358 angle assembly to the 358 legs with the specified hardware.  
Then attach the 358 table planks to the 358 angle assembly with the specified hardware.



## STEP 3



Attach the 48" Seat Planks to the 358 Legs using specified hardware.

## OVERALL DIMENSIONS

