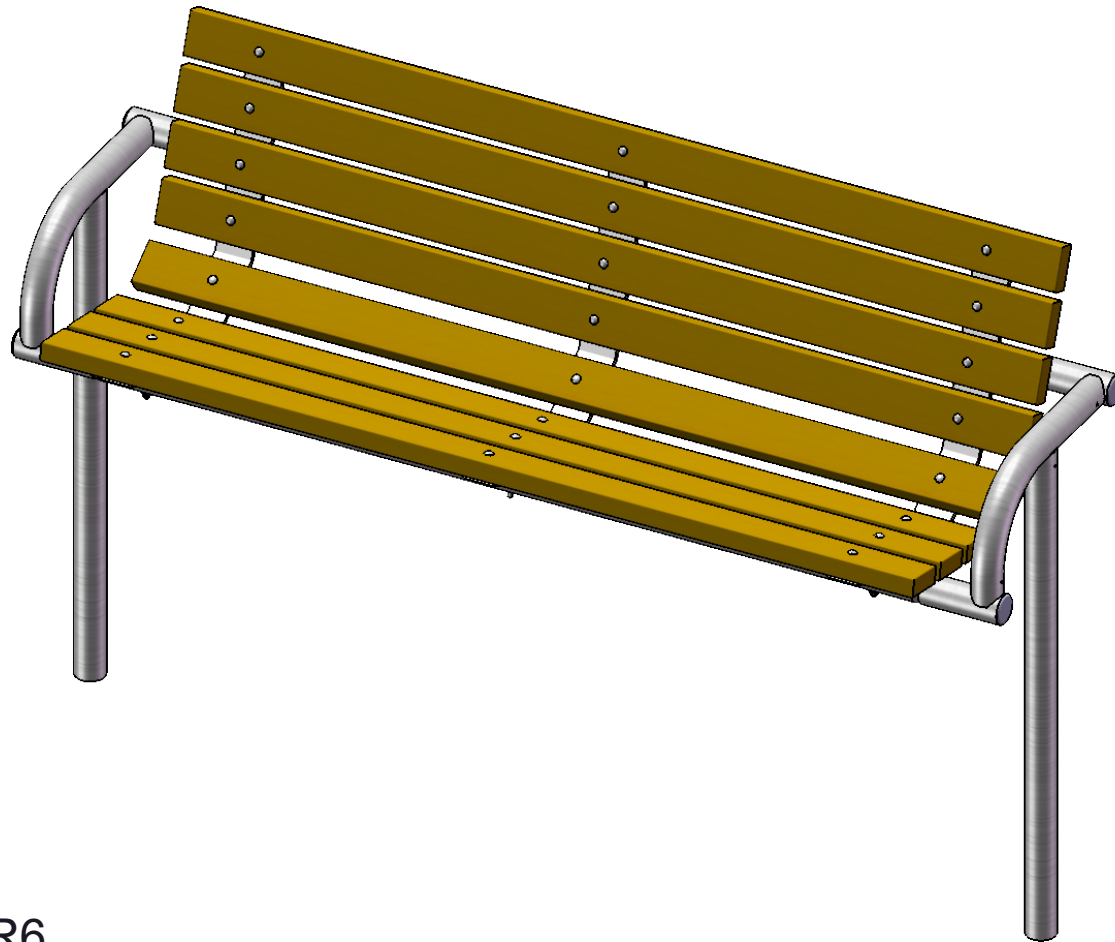




A **PLAYCORE** Company



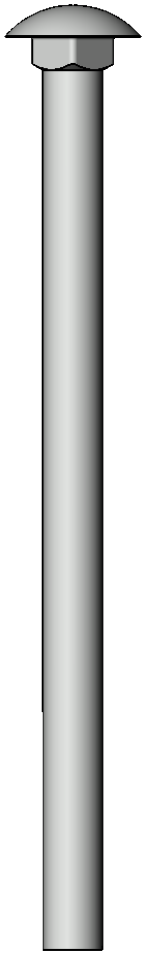
Model # 975S-R6



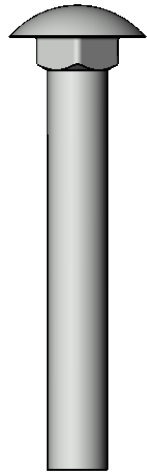
SAFETY WARNINGS & EQUIPMENT INSPECTION

- Owners and installers please note these safety warnings and make use of this checklist on a regular basis.
- Follow installation instructions when erecting equipment.
- Ground surfaces around equipment should be restored as needed. Concrete footings should never be exposed. Surface depth should comply with ASTM and CPSC specifications.
- Check for and repair damage caused by wear or vandalism, a major factor in injury causing situations.
- All protruding bolts should be covered or cut off and finished smooth. Sharp edges on pipes should be capped or removed. Check for bent, broken, or severely worn pipe, and replace.
- All equipment should be free of rust and repainted whenever necessary to deter rusting.
- We provide our customers with layout sheets and installation instructions. Please keep on file the specifications sheet that contains the listing of every part used.
- Never add components not intended for use with this product.
- Regular maintenance is necessary in this and all park and recreational equipment to insure the safety of the user.
- Note: Proper maintenance of equipment requires regular tightening of all bolts, nuts, and setscrews.
- Note: Regular checking of all parts, castings, etc. should be made. If a part is broken or worn, it should be replaced immediately.
- Check to be sure all fittings are tight and that bars and pipes do not move.
- Replace all worn S-hooks. S-hooks must be completely closed. Failure to close S-hooks can result in serious injury to the user. NEVER reuse S-hooks.
- Test for free movement of swing hanger and other moving attached parts.
- Check for worn chains and replace them.
- A soft resilient surface should be placed under all swings extending at least twice the height of the top rail both front and back.

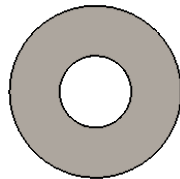
HARDWARE



5/16" x 4-3/4"
Carriage Bolt



5/16" x 2-1/4"
Carriage Bolt

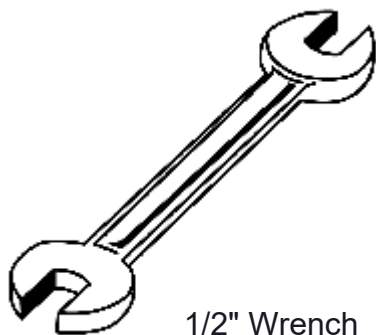


5/16" Washer

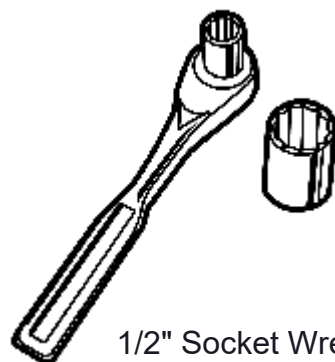


5/16" Hex Nut

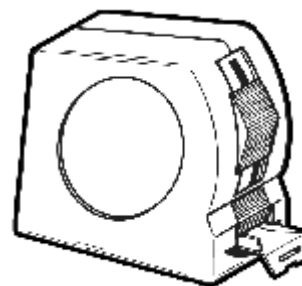
TOOLS REQUIRED



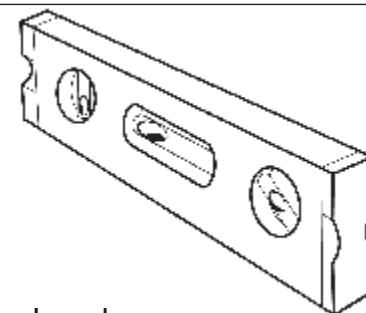
1/2" Wrench



1/2" Socket Wrench



Tape Measure



Level

ULTRA SITE PRODUCT SPECIFICATIONS

975S-R6 INGROUND MOUNT CONTOURED BENCH WITH BACK

Seats: Minimum of 96% commingled post-consumer or post-industrial recycled plastic 2x4. With a maximum of 4% due to various additives including color and UV stabilization to obtain desirable properties.

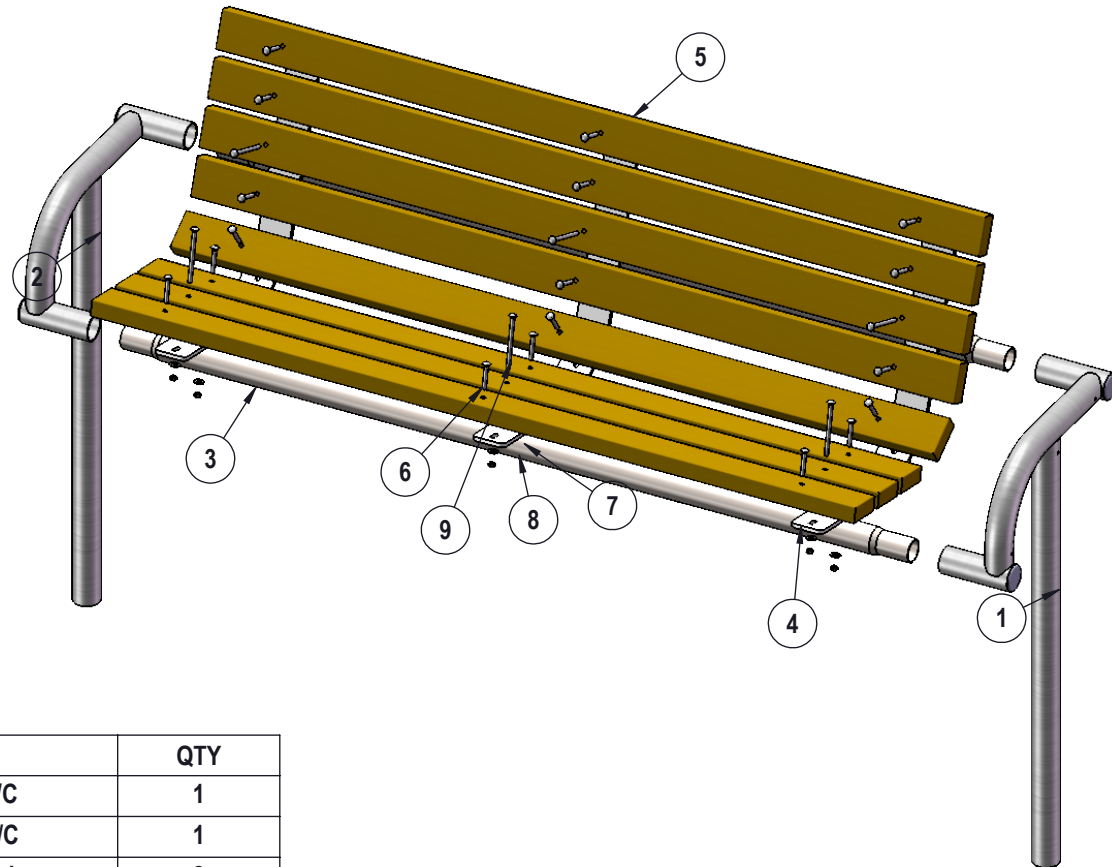
Frame: Legs are 2-3/8" O.D. x 10 gauge pre-galvanized structural steel tubing. Seat support is bent over a mandrel through the bend radius producing a wrinkle free bend. Tube ends are pre-galvanized steel capped. Seat mounting points are 7 gauge x 1-1/2" die stamped steel flat bar. Spreader bars are 2-3/8" O.D. x 12 gauge pre-galvanized structural steel tubing. All electrically MIG welded.

Frame Coating: Electrostatic powder coated application oven cured.

Hardware: All zinc hardware fasteners.

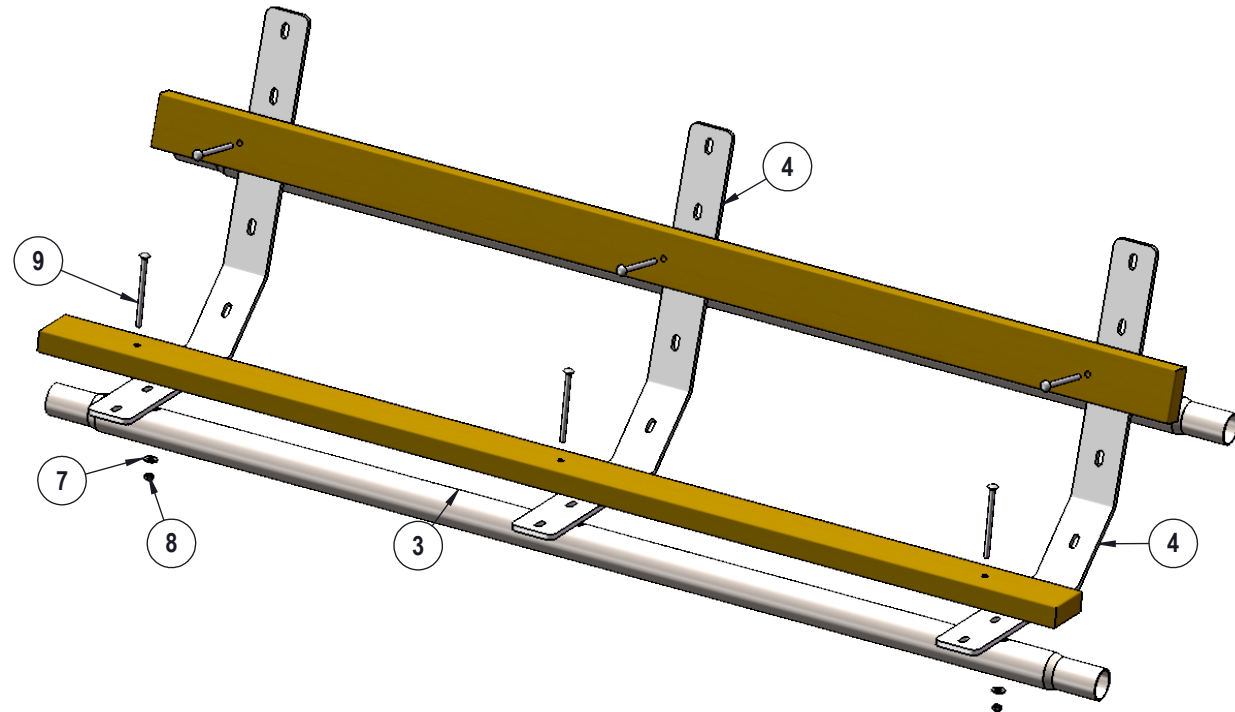
Dimensions: 6' inground mount bench with back. Seats are 25" wide x 72" long. Seat height is 18" from the ground to the top of the seat. The overall dimensions are 78-3/4" x 25" x 34".

COMPONENTS



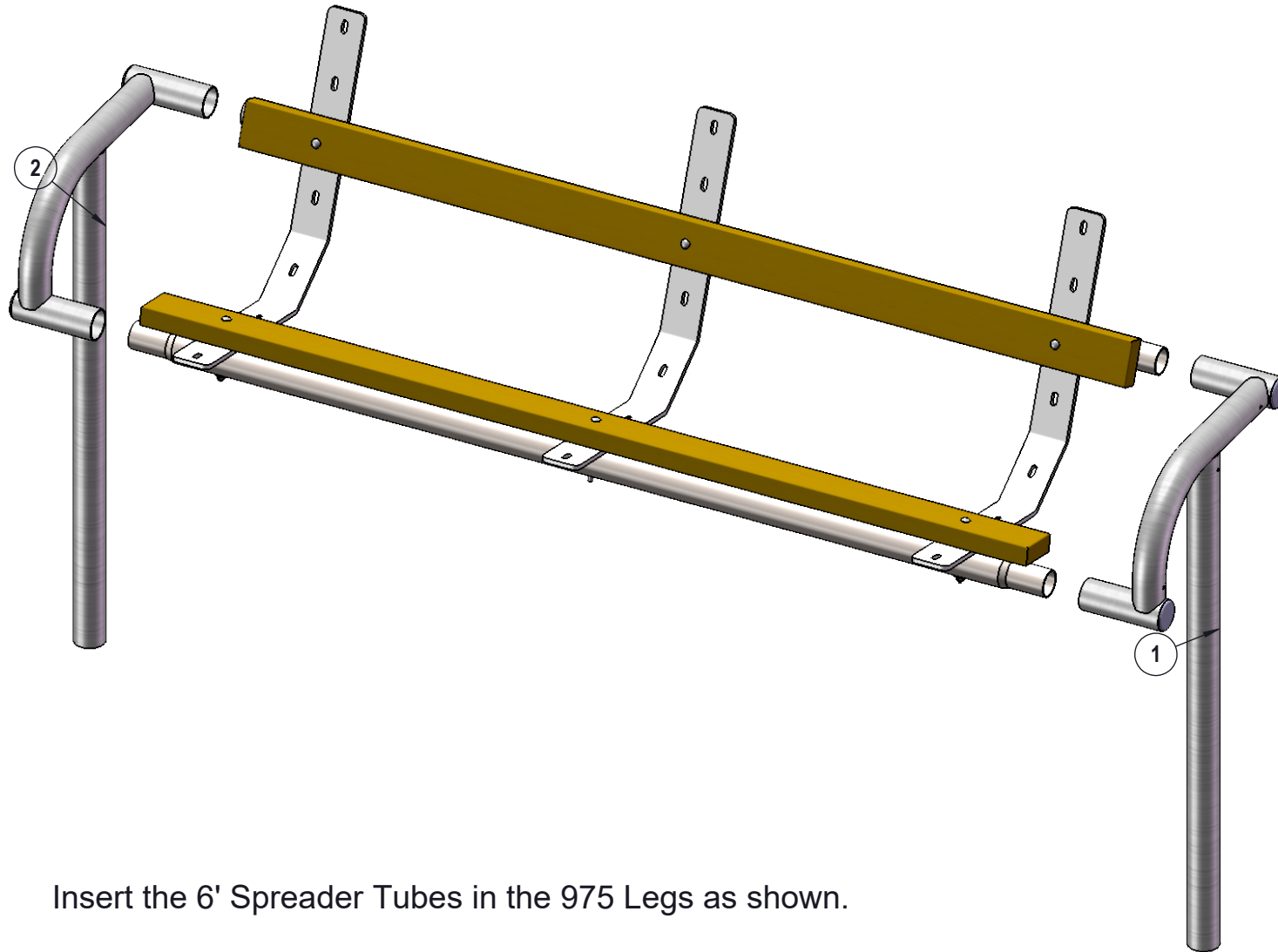
ITEM NO.	PartNo	DESCRIPTION	QTY
1	P-W975S-L	975S LH wood leg P/C	1
2	P-W975S-R	975S RH wood leg P/C	1
3	01-01-0310	6' recycled spreader tube	2
4	01-01-0051	982 Boomerang	3
5	R72-2x4-B	2 x 4 Recycled Bench Plank (6')	8
6	33-06-0006	5/16" x 2 1/4" Carriage Bolt (Zinc)	18
7	33-02-0001	5/16" Zinc Plated Washer	24
8	33-01-0001	5/16" Hex Nut (Zinc)	24
9	33-06-0081	5/16" x 4 3/4" Carriage Bolt	6

STEP 1



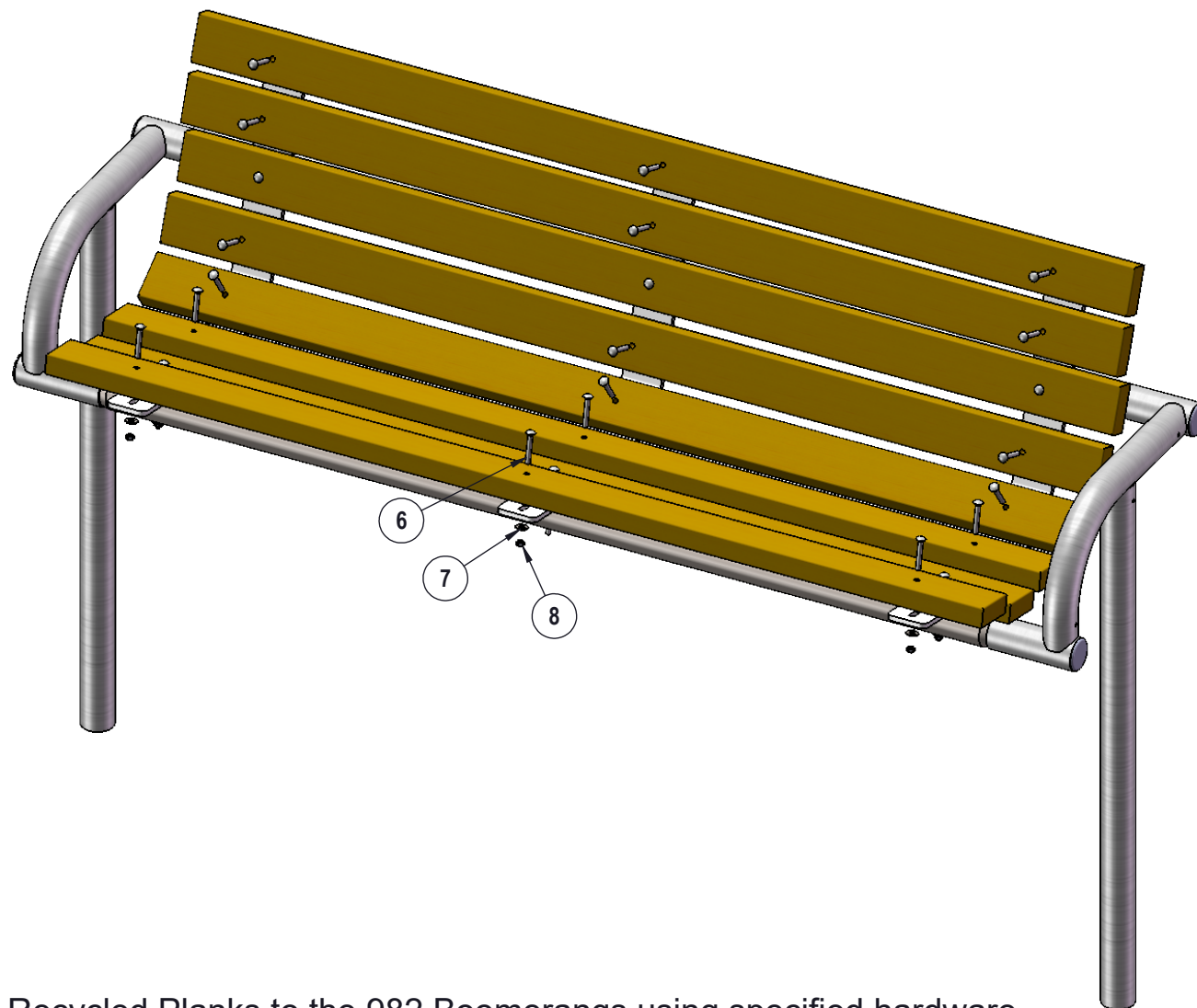
Attach the 982 Boomerangs and 2 of the 6' Recycled Planks to the 6' Spreader Tubes as shown using specified hardware. This will help prevent readjusting the spreader tubes later to fit correctly after putting the legs on.

STEP 2



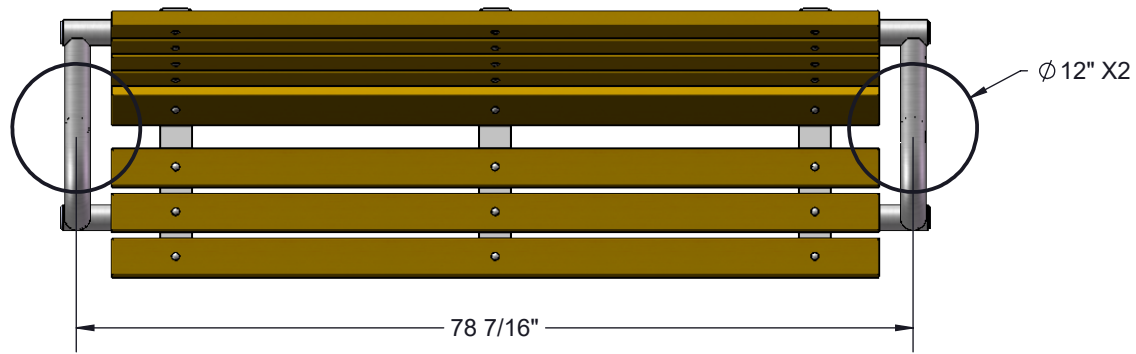
Insert the 6' Spreader Tubes in the 975 Legs as shown.

STEP 3

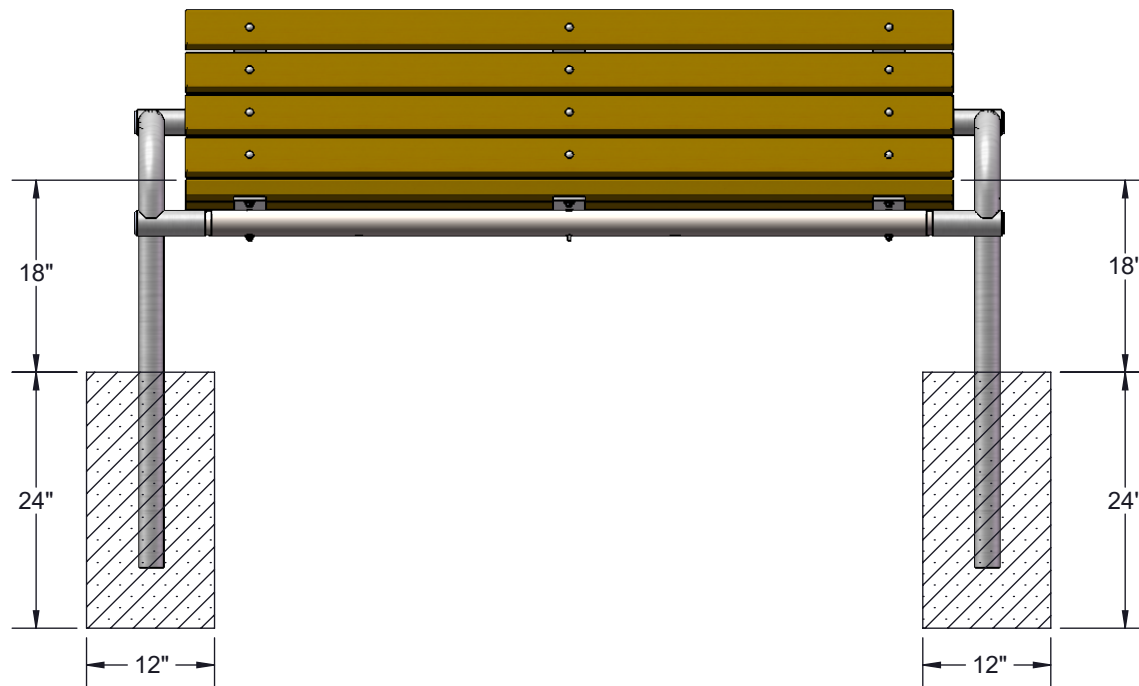


Attach the remaining 6' Recycled Planks to the 982 Boomerangs using specified hardware.

FOOTINGS



Estimated Required Concrete:
9 - 50lb Bags of Concrete Mix



OVERALL DIMENSIONS

